

To convert your spending via Citi LINE Connect

Convert now, Click >>

Add Citi Thailand on Application

Click

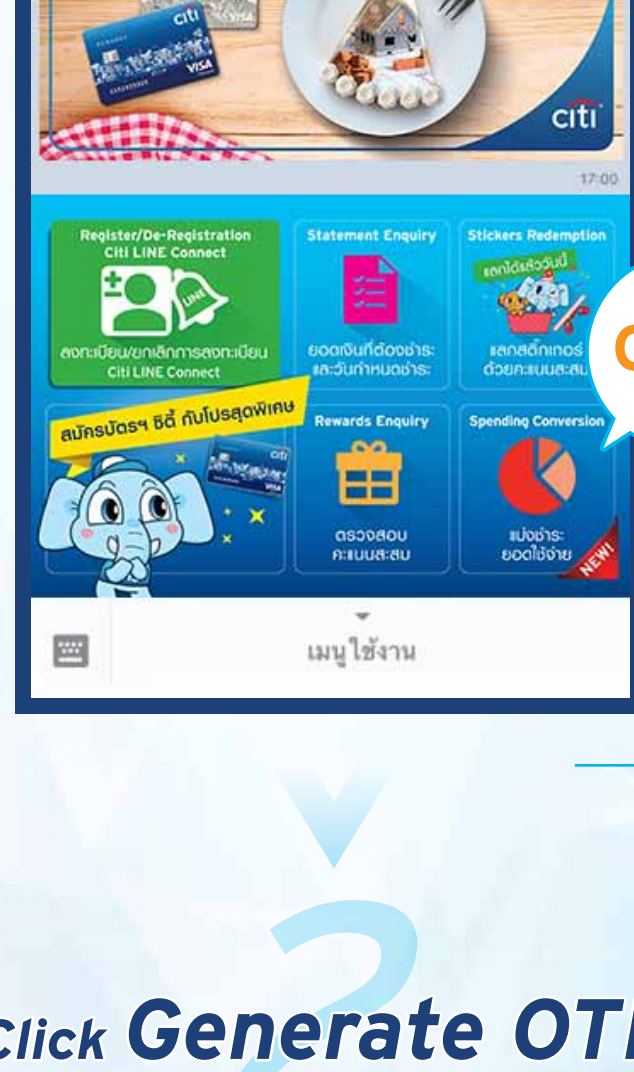
Click



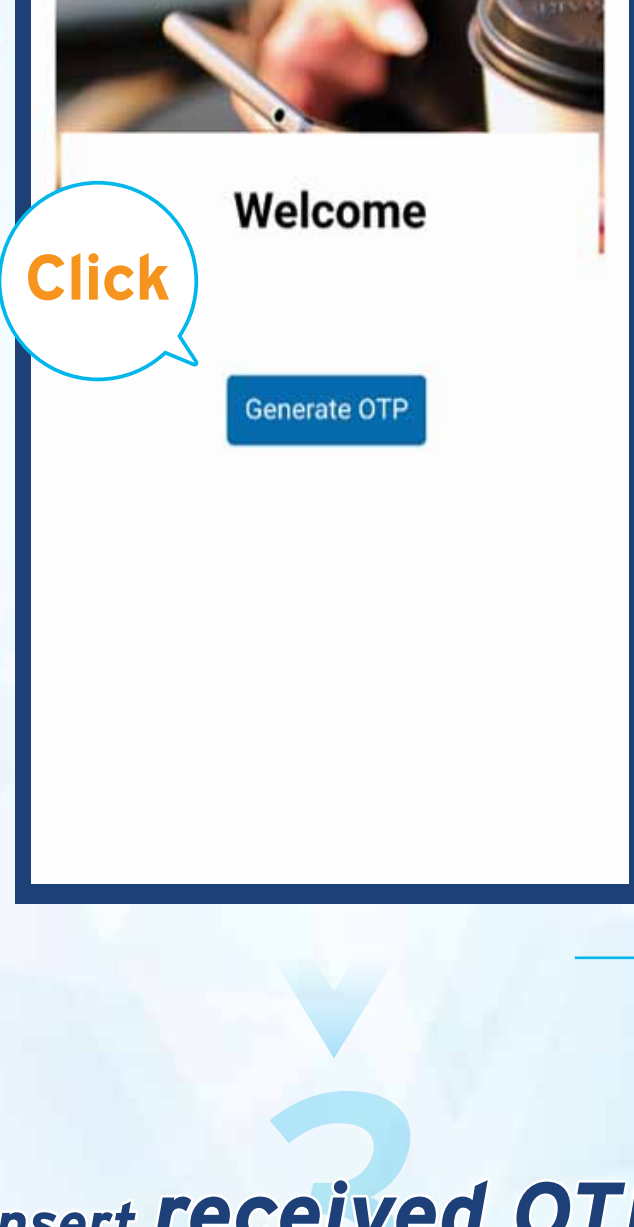
to register Citi LINE Connect

Input the last 4 digits of credit card. Citi-registered phone number, date of birth, and OTP code (sent via SMS)

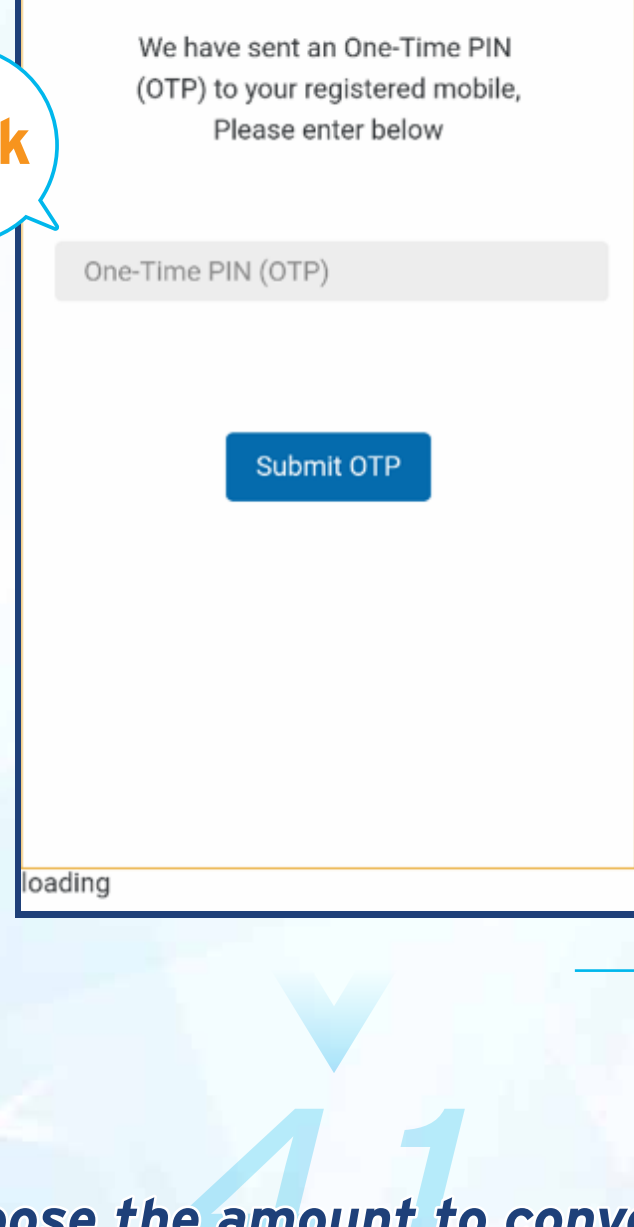
1 Click Spending Conversion



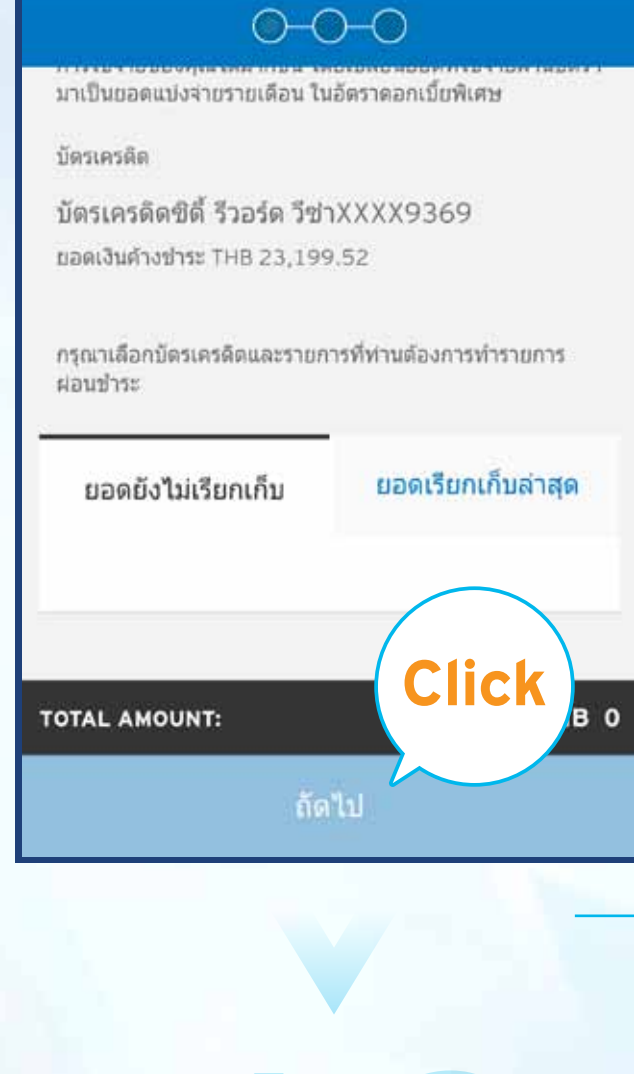
2 Click Generate OTP



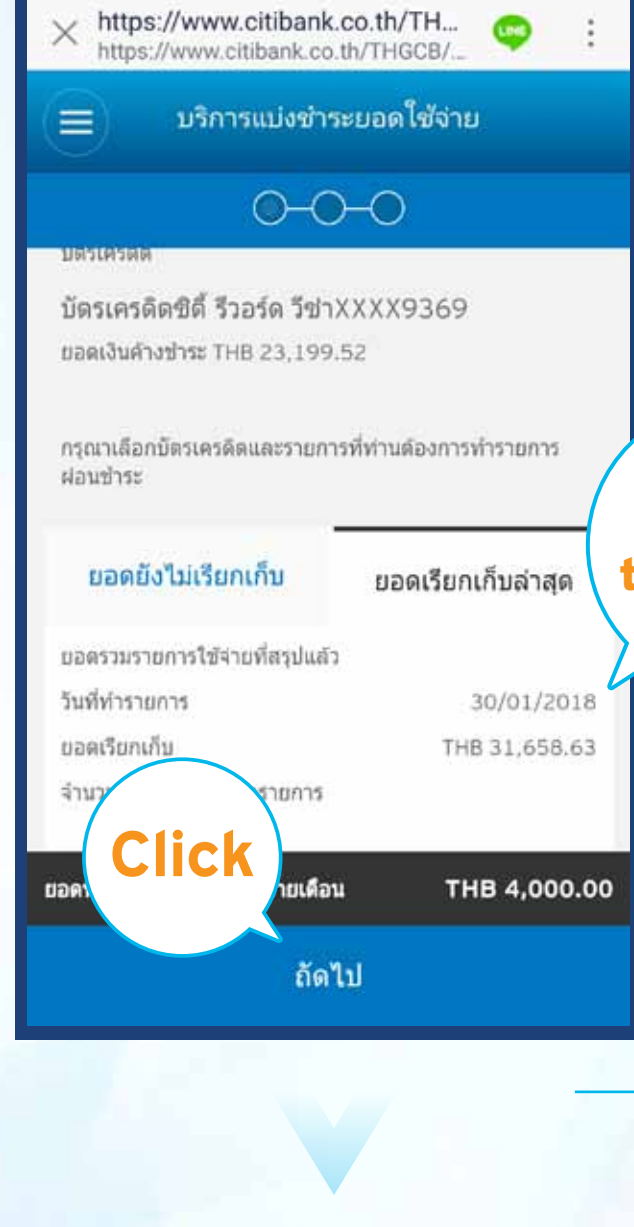
3 Insert received OTP



Choose the amount to convert
For unbilled transaction, **click unbilled details**, choose unbilled transaction to convert and **click Continue**

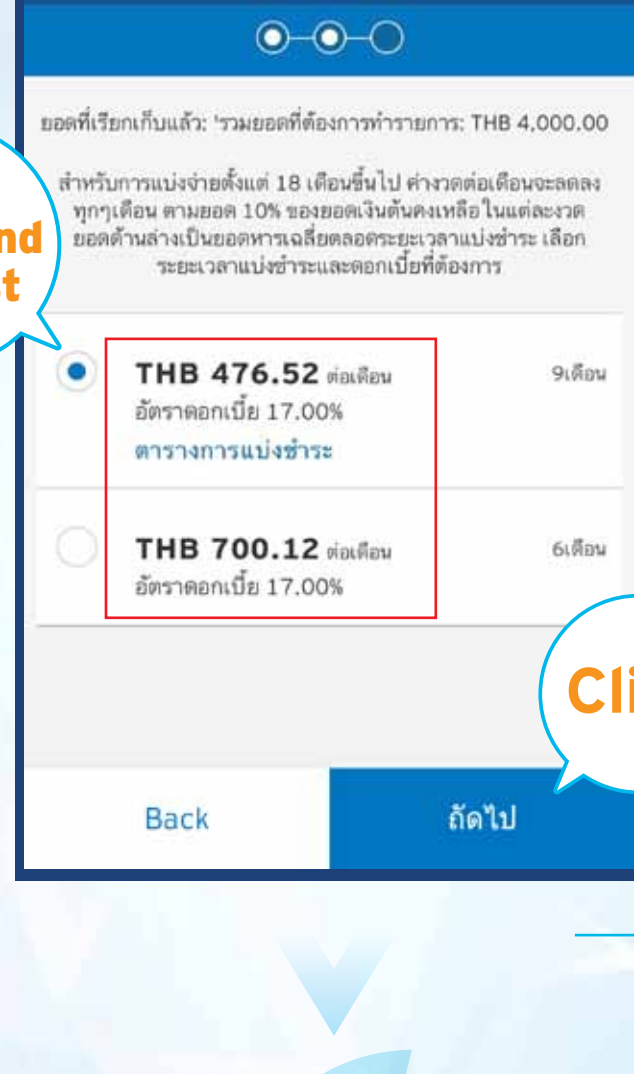


Choose the amount to convert
For billed amount, **select Billed Details**, insert amount to convert and **click Continue**

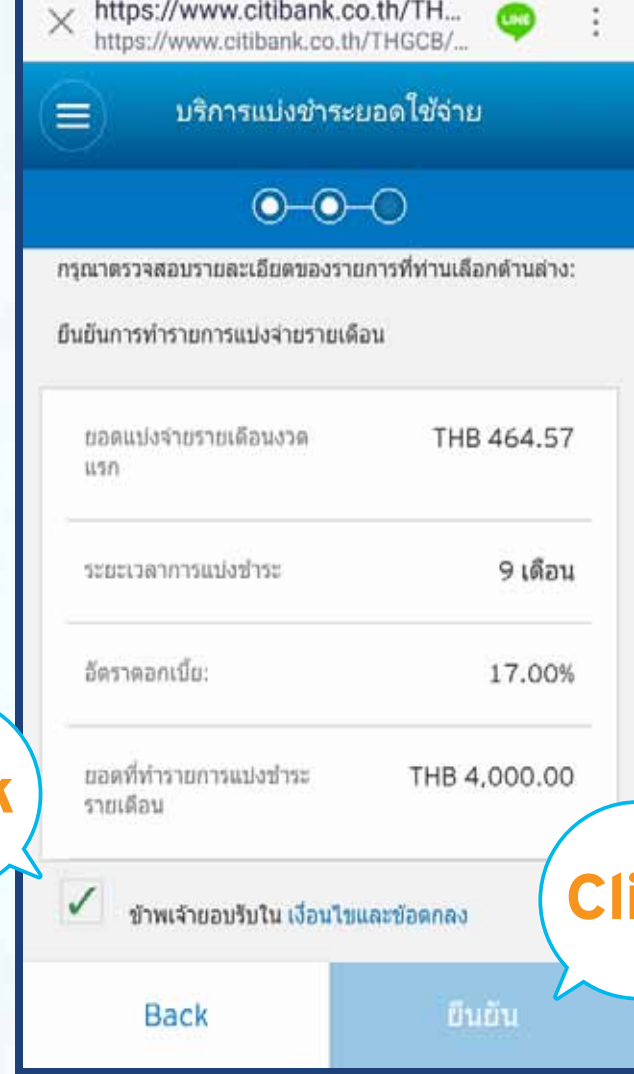


5 Select tenor and interest rate and click Next

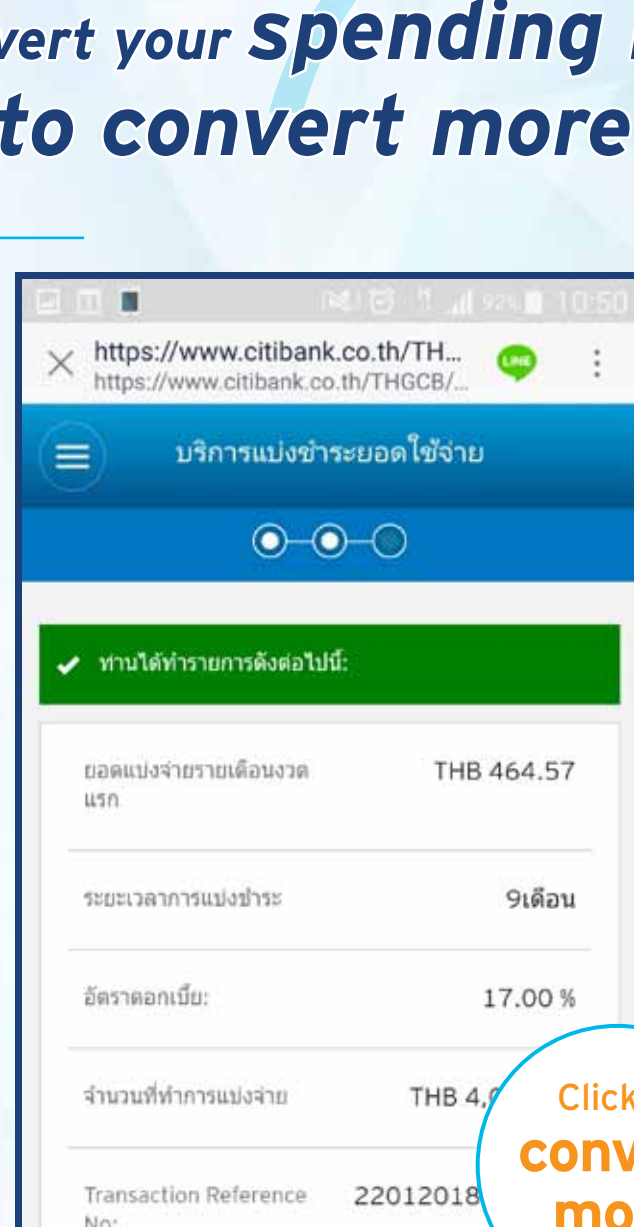
For 18-month or more installments on Citi Credit Card, the installment shall reduce from month to month with 10% of outstanding principle billed in each installment. The amount below is an average repayment amount to be paid throughout the installment plan duration.



Review your transaction Select **I agree to the Terms & Conditions** and **click Confirm**



To convert your **spending more**, **click to convert more below**



Convert now, Click >>

